

PRODUCT INFORMATION PACKET



Model No: 5KH46MN3025
Catalog No: 5KH46MN3025
Fan and Blower Motor, .33,.11 HP, 1 Ph, 60 Hz, 115 V, 1800 RPM, 56 Frame, DP



Regal and Leeson are trademarks of Regal Rexnord Corporation or one of its affiliated companies.
©2024 Regal Rexnord Corporation, All Rights Reserved. MC017097E





Nameplate Specifications

Phase	1	Output HP	.33,.11 Hp
Output KW	0.25 kW	Voltage	115 V
Speed	1725,1140 rpm	Service Factor	1.35
Frame	56	Enclosure	Drip Proof
Thermal Protection	No Protection	Efficiency	56.5 %
Ambient Temperature	40 °C	Frequency	60 Hz
Current	5.7,3.2 A	Power Factor	0
Duty	Continuous	Insulation Class	B
KVA Code	P	Drive End Bearing Size	6203
Opp Drive End Bearing Size	6203	UL	Recognized
CSA	Yes	CE	N
Number of Speeds	2		

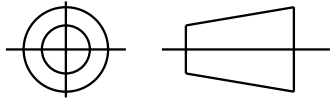
Technical Specifications

Electrical Type	Split Phase	Starting Method	SM
Poles	4	Rotation	Counterclockwise/Clockwise
Mounting	Resilient Base	Motor Orientation	ANY
Drive End Bearing	BALL	Opp Drive End Bearing	BALL
Frame Material	Rolled Steel	Overall Length	10.88 in
Frame Length	6.55 in	Shaft Diameter	0.630 in
Shaft Extension	1.88 in		
Connection Drawing	52A106478AA	Outline Drawing	52A109511P2

This is an uncontrolled document once printed or downloaded and is subject to change without notice. Date Created:09/18/2024

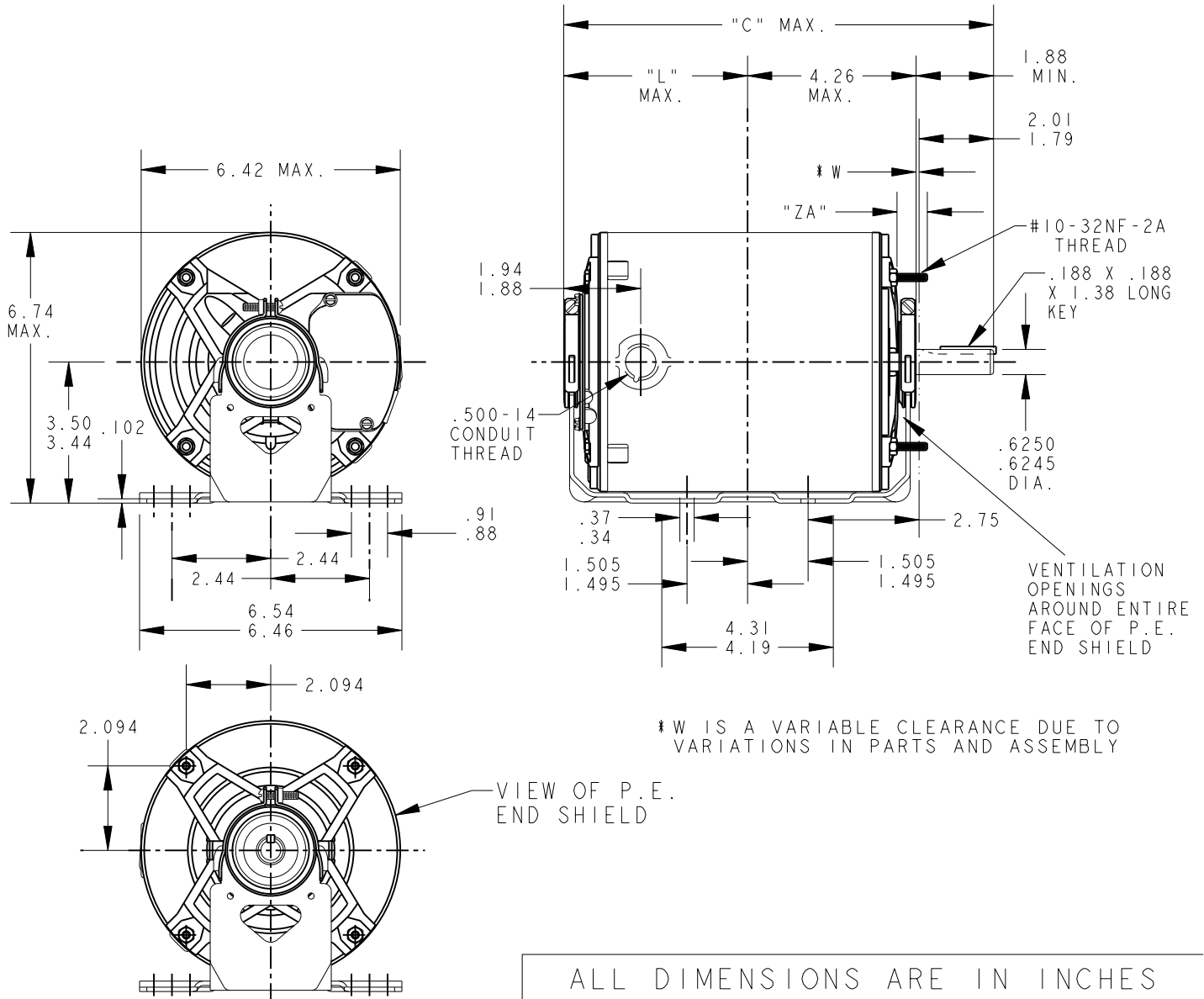
SHEET 1
REV 3
52A109511
SIZE DRAWING NO. A

THIRD ANGLE PROJECTION



REVISIONS

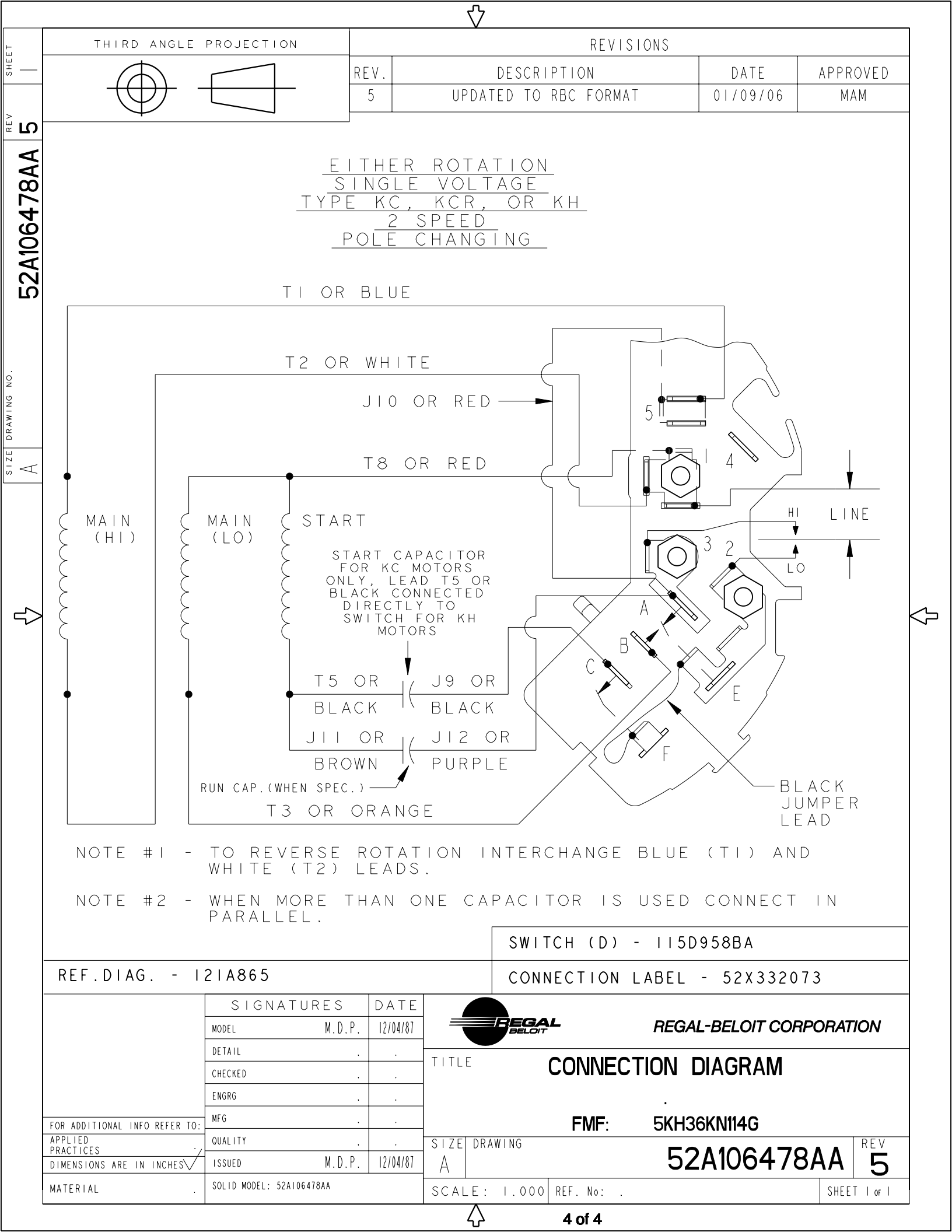
REV.	DESCRIPTION	DATE	APPROVED
2	ADDED PART #4.	07/05/94	M.D.PAPE
3	CHG TO RBC FORMAT PER ISO5-1777	03/16/06	SUDHA



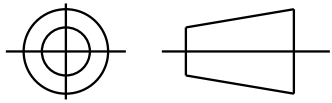
ALL DIMENSIONS ARE IN INCHES

4	KH/K	49	56	12.01	5.75	.62					7.68
3	KH/K	49	56	11.48	5.22	.62					7.15
2	KH/K	46	56	10.88	4.62	.62					6.55
1	KH/K	46	56	10.88	4.62	.62					6.55
P	TYPE	GE SIZE	NEMA FR.	"C"	"L"	"ZA"					MIN. SHELL

FOR ADDITIONAL INFO REFER TO: APPLIED PRACTICES DIMENSIONS ARE IN INCHES ✓ MATERIAL	SIGNATURES		DATE	<p>REGAL-BELOIT CORPORATION</p> <p>TITLE: OUTLINE</p> <p>GENERAL PURPOSE MOTOR - DRIP PROOF - BALL BEARING - RESILIENT BASE EXTENDED CLAMP SCREWS FMF - 40 FRAME REDESIGN</p>
	MODEL	MA MARKS	03/29/94	
	DETAIL	.	.	
	CHECKED	.	.	
	ENGRG	.	.	
MFG	.	.		
QUALITY	.	.	SIZE DRAWING	
ISSUED	M.A.M.	03/29/94	A	
SOLID MODEL: 52A109511		SCALE: 0.250		REF. No: .
			52A109511	REV 3
			SHEET 1 of 1	



THIRD ANGLE PROJECTION



REVISIONS

REV.	DESCRIPTION	DATE	APPROVED
5	UPDATED TO RBC FORMAT	01/09/06	MAM

EITHER ROTATION
SINGLE VOLTAGE
TYPE KC, KCR, OR KH
2 SPEED
POLE CHANGING

T1 OR BLUE

T2 OR WHITE

J10 OR RED

T8 OR RED

MAIN (HI)

MAIN (LO)

START

START CAPACITOR
 FOR KC MOTORS
 ONLY, LEAD T5 OR
 BLACK CONNECTED
 DIRECTLY TO
 SWITCH FOR KH
 MOTORS

T5 OR BLACK
 J11 OR BROWN
 J9 OR BLACK
 J12 OR PURPLE

RUN CAP. (WHEN SPEC.)

T3 OR ORANGE

BLACK JUMPER LEAD

NOTE #1 - TO REVERSE ROTATION INTERCHANGE BLUE (T1) AND WHITE (T2) LEADS.

NOTE #2 - WHEN MORE THAN ONE CAPACITOR IS USED CONNECT IN PARALLEL.

SWITCH (D) - 115D958BA

REF. DIAG. - 121A865

CONNECTION LABEL - 52X332073

SIGNATURES DATE

MODEL	M.D.P.	12/04/87
DETAIL	.	.
CHECKED	.	.
ENGRG	.	.
MFG	.	.



REGAL-BELOIT CORPORATION

TITLE CONNECTION DIAGRAM

FMF: 5KH36KN114G

FOR ADDITIONAL INFO REFER TO:

APPLIED PRACTICES	QUALITY	.	.
DIMENSIONS ARE IN INCHES ✓	ISSUED	M.D.P.	12/04/87

SIZE DRAWING

A

52A106478AA

REV 5

MATERIAL

SOLID MODEL: 52A106478AA

SCALE: 1.000

REF. No: .

SHEET 1 of 1